

Interiors & Décor

THE MAGAZINE AND THE ARCHITECTS

www.interiorsndecor.com



The W-Factor!

Inspirational Women
Success Stories..

Special Feature
Doors & Windows | Page...056





EQUIPPED WITH EXTENSIVE KNOWLEDGE & PERMANENT BOND MAKING ABILITY

Ritu's skills lie in delivering through her collaborative approach across all phases of design and construction. Shami's professional experience also includes design strategies, business development and a special focus on authoring design stories.



Shami Goregaoker
Design Director, GA Design

Ritu Goregaoker
Design Director, GA Design





Cover Feature

**RITU GOREGAOKER,
DESIGN DIRECTOR, GA Design:**

Ritu finished her professional studies in Interior design in the year 1996 from Sophia Polytechnic. Soon after, she worked with several architectural and interior design firms to gain experience in Interior design and Architecture in the residential as well as commercial sectors. She joined GA design in 2001 and over the years has done enormous work designing high end personal residences, commercial office interiors etc. Whilst heading the interior design team at GA design, she has designed interiors for several luxury apartments as well as commercial spaces.

**SHAMI GOREGAOKER,
DESIGN DIRECTOR, GA Design:**

Shami studied interior design at Sir J J School of Arts as well as the Nirmala Niketan Polytechnic in Mumbai. At GA design, she works on interior design projects of luxury apartments and clubhouses in Mumbai. Shami is a certified colour consultant and is equipped with extensive knowledge on interior styling as well as colour and lighting concepts. She combines this knowledge with a keen eye for latest design trends to create integrated urbane designs. Shami's design approach compliments.

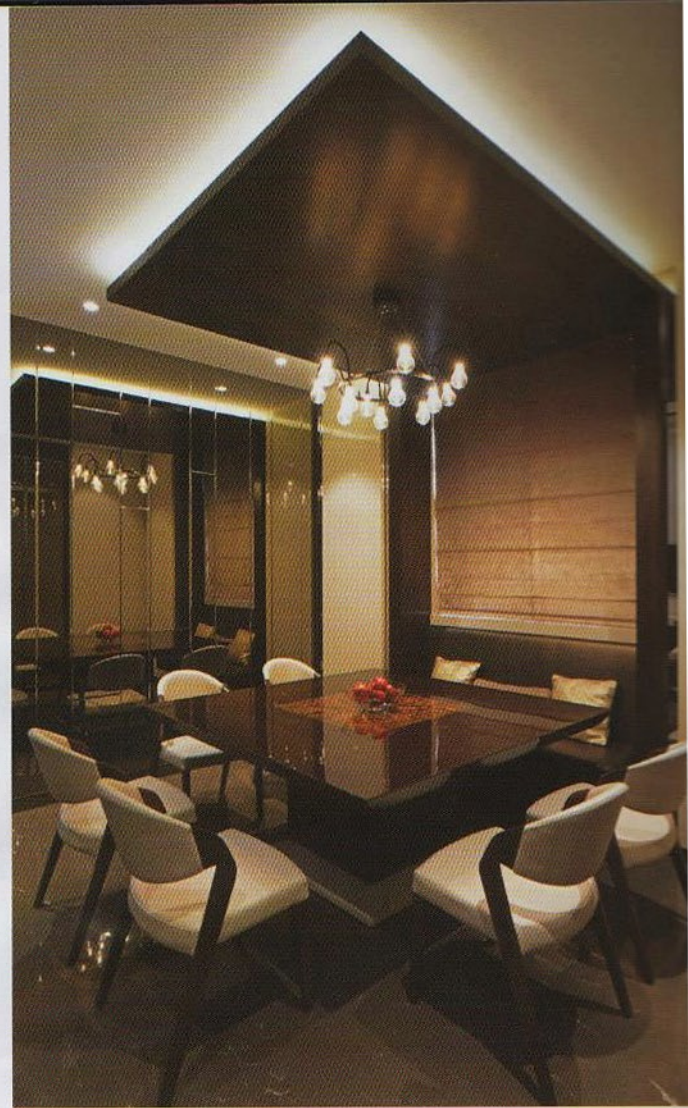
**Out Of Many, A Premium And Recognized
Project-Design And Innovation Process**

SENSORIAL & SPATIAL EXPERIENCES | Sense and space are dependent on a lot of things in a designed space. The materials used and the wall treatments done are accentuating factors in giving a sense of volume, space and affect the look and feel of any given room.

THE VIEW | The apartment is located at Nepean Sea road, one of the more upmarket localities of Mumbai. With a square foot area of 5000 sq.ft spread over two floors the designers have dedicated the entire living room to open up to the stunning Arabian Sea view.

FUNCTIONALITY/ EFFICIENCY & ADHERENCE TO CLIENTS' BRIEF | Keeping the client's requirements in mind along with the structural limitations, the planning for this house was done in such a way as to make optimum use of space.

CONTEXTUAL REFERENCE | As the home is



located in Nepean Sea road right across the sea, and is on the 19th & 20th floor we wanted to make full use of the stunning sea view. Use of material has also been done keeping in mind the salty sea air. Treatments to mild steel material have carried out to prevent them from rusting.

GREEN PRACTICES | By way of a check on the waste of materials, usage of water & electricity at the execution stage. Usage of recyclable and natural products have been kept in mind and used accordingly. ■

